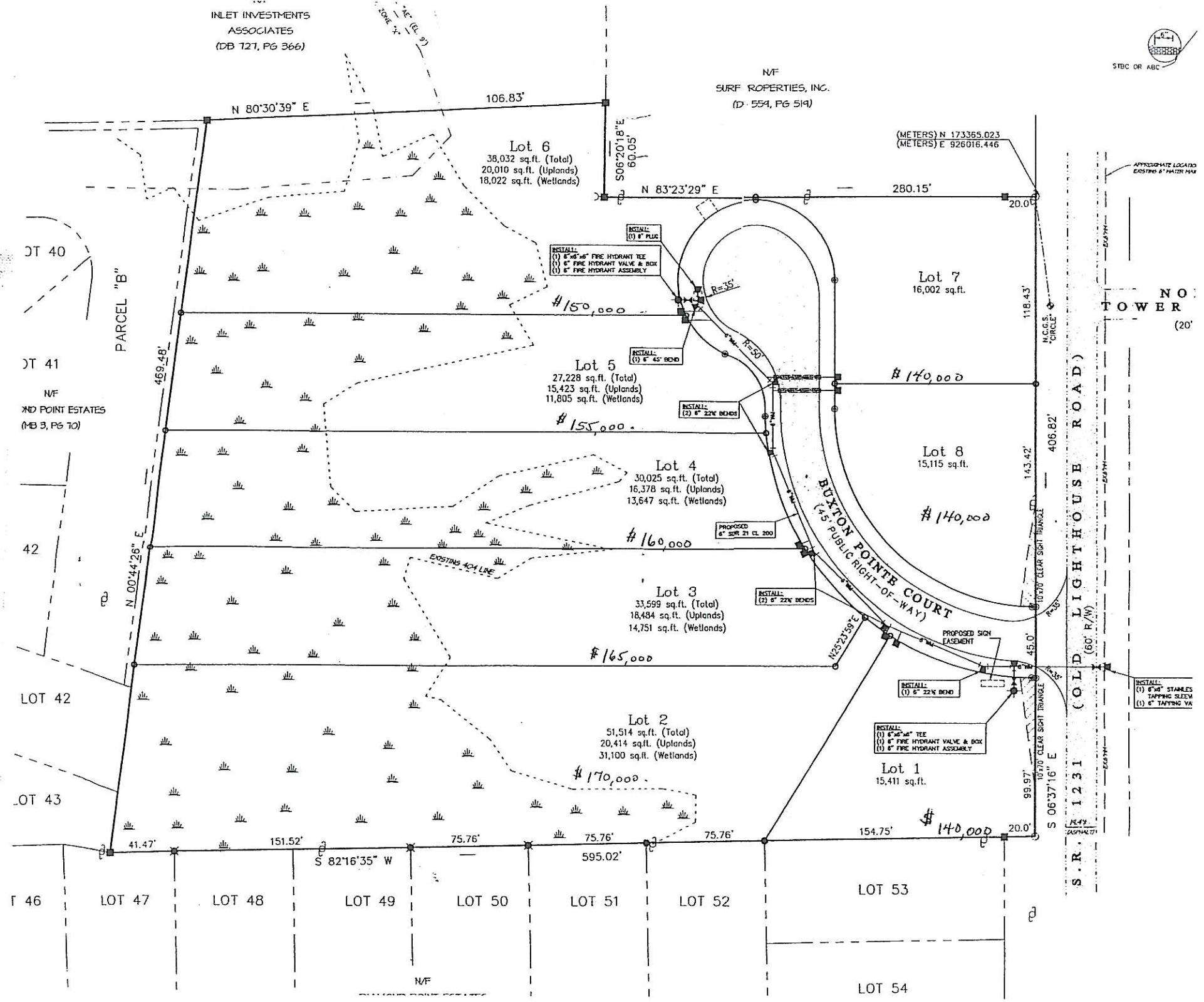


INLET INVESTMENTS ASSOCIATES (DB 727, PG 366)

N/F SURF PROPERTIES, INC. (D-554, PG 514)



LOT 40

LOT 41

LOT 42

LOT 43

LOT 46

LOT 47

LOT 48

LOT 49

LOT 50

LOT 51

LOT 52

LOT 53

LOT 54

TOWER NO. 20'

S.R. 1231 (OLD LIGHTHOUSE ROAD)

PARCEL "B"

BUXTON POINTE COURT (4.5' PUBLIC RIGHT-OF-WAY)

Lot 6
38,032 sq. ft. (Total)
20,010 sq. ft. (Uplands)
18,022 sq. ft. (Wetlands)

Lot 5
27,228 sq. ft. (Total)
15,423 sq. ft. (Uplands)
11,805 sq. ft. (Wetlands)

Lot 4
30,025 sq. ft. (Total)
16,378 sq. ft. (Uplands)
13,647 sq. ft. (Wetlands)

Lot 3
33,599 sq. ft. (Total)
18,484 sq. ft. (Uplands)
14,751 sq. ft. (Wetlands)

Lot 2
51,514 sq. ft. (Total)
20,414 sq. ft. (Uplands)
31,100 sq. ft. (Wetlands)

Lot 7
16,002 sq. ft.

Lot 8
15,115 sq. ft.

Lot 1
15,411 sq. ft.

INSTALL:
(1) 6" 45° FIRE HYDRANT TEE
(1) 6" FIRE HYDRANT VALVE & BOX
(1) 6" FIRE HYDRANT ASSEMBLY

INSTALL:
(1) 6" 45° BEND

INSTALL:
(2) 6" 22½° BENDS

PROPOSED
6" SWR 21 CL 200

INSTALL:
(2) 6" 22½° BENDS

INSTALL:
(1) 6" 22½° BEND

INSTALL:
(1) 6" 45° TEE
(1) 6" FIRE HYDRANT VALVE & BOX
(1) 6" FIRE HYDRANT ASSEMBLY

INSTALL:
(1) 6" 45° STAMPLES
(1) 6" TAPPING SLEEVE
(1) 6" TAPPING VALVE

(METERS) N 173365.023
(METERS) E 926016.446

APPROXIMATE LOCATED
EXISTING 6" WATER MAIN

N.C.C.S.
"CIRCLE"

10270 CLEAR SIGHT TRIANGLE

10270 CLEAR SIGHT TRIANGLE

10270 CLEAR SIGHT TRIANGLE

10270 CLEAR SIGHT TRIANGLE

10270 CLEAR SIGHT TRIANGLE

10270 CLEAR SIGHT TRIANGLE

10270 CLEAR SIGHT TRIANGLE